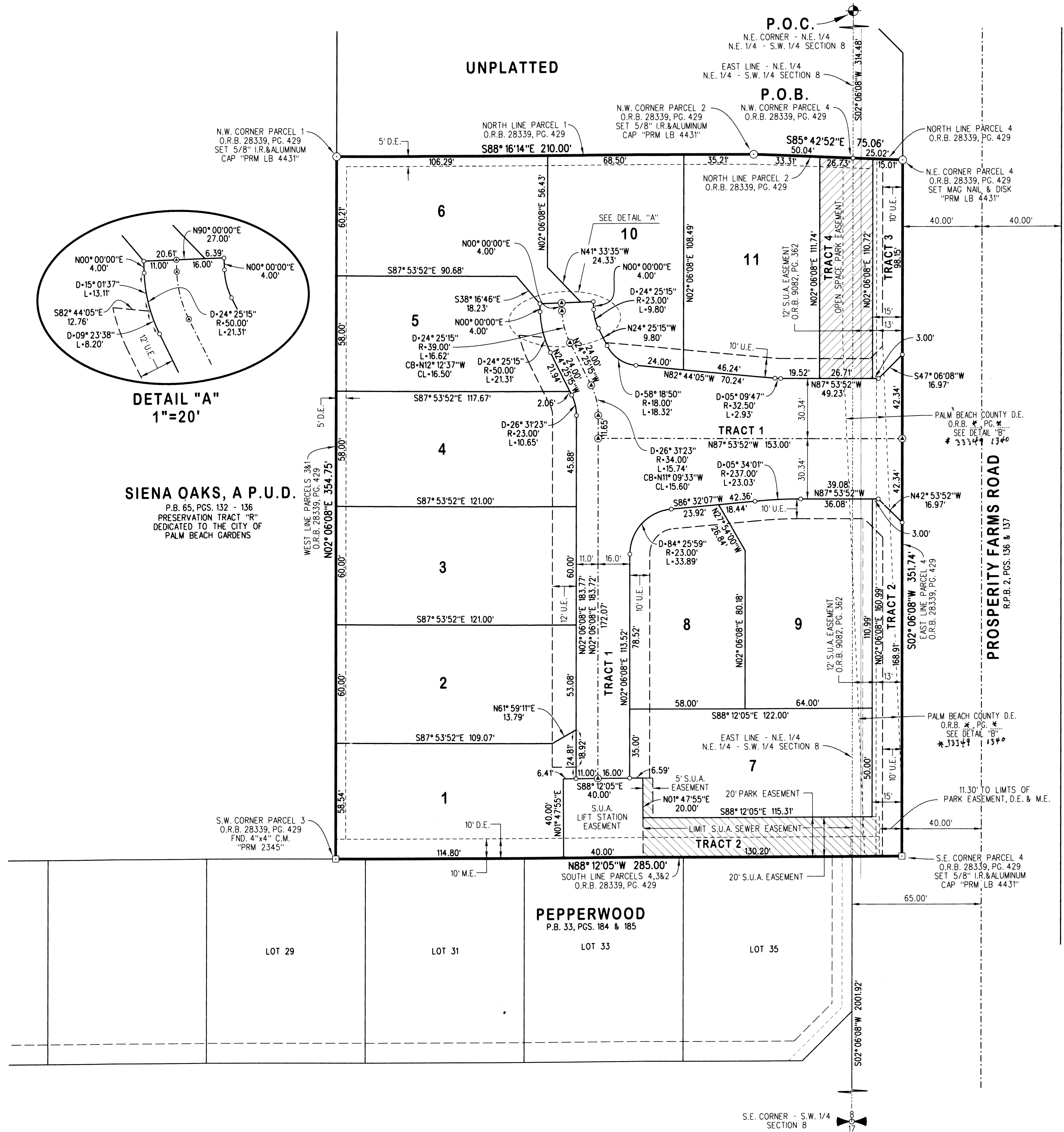


PROSPERITY VILLAGE

LYING IN SECTION 8, TOWNSHIP 42 SOUTH, RANGE 43 EAST,
VILLAGE OF NORTH PALM BEACH, PALM BEACH COUNTY, FLORIDA
DECEMBER 2021 SHEET 2 OF 2

43



LEGEND / ABBREVIATIONS

- C = CENTERLINE
- C.M. = CONCRETE MONUMENT
- D.E. = DRAINAGE EASEMENT
- FPL = FLORIDA POWER & LIGHT
- FND. = FOUND
- I.R. = IRON ROD
- M.E. = MAINTENANCE EASEMENT
- N.O. = NUMBER
- O.R.B. = OFFICIAL RECORD BOOK
- P.B. = PLAT BOOK
- P.C.P. = PERMANENT CONTROL POINT
- PG. = PAGE
- PGS. = PAGES
- P.O.B. = POINT OF BEGINNING
- P.O.C. = POINT OF COMMENCEMENT
- P.R.M. = PERMANENT REFERENCE MONUMENT
- P.S.M. = PROFESSIONAL SURVEYOR AND MAPPER
- S.U.A. = SEACAST UTILITY AUTHORITY
- U.E. = UTILITY EASEMENT
- CB = CHORD BEARING
- D = DELTA
- L = LENGTH
- R = RADIUS
- N = NORTH
- S = SOUTH
- E = EAST
- W = WEST
- N.E. = NORTHEAST
- N.W. = NORTHWEST
- S.E. = SOUTHEAST
- S.W. = SOUTHWEST
- ⊙ = SET MAG NAIL & DISK "PCP LB 4431"
- [Hatched Box] = LIMIT OF PARK EASEMENT
- [Diagonal Hatched Box] = LIMIT OF OPEN SPACE PARK EASEMENT

LIDBERG LAND SURVEYING, INC.

675 West Indiantown Road, Suite 200,
Jupiter, Florida 33458 TEL: 561-746-8454

CAD.	K:\UST \ 084243 \ 21-025 \ 21-025-306 \ 21-025-306.DGN		
REF.			
F.L.D.	FB.	PG.	JOB 21-025-306
OFF.	R.J.W.		DATE 06/24/2021
CKD.	D.C.L.	SHEET 2 OF 2	DWG. 021-025P